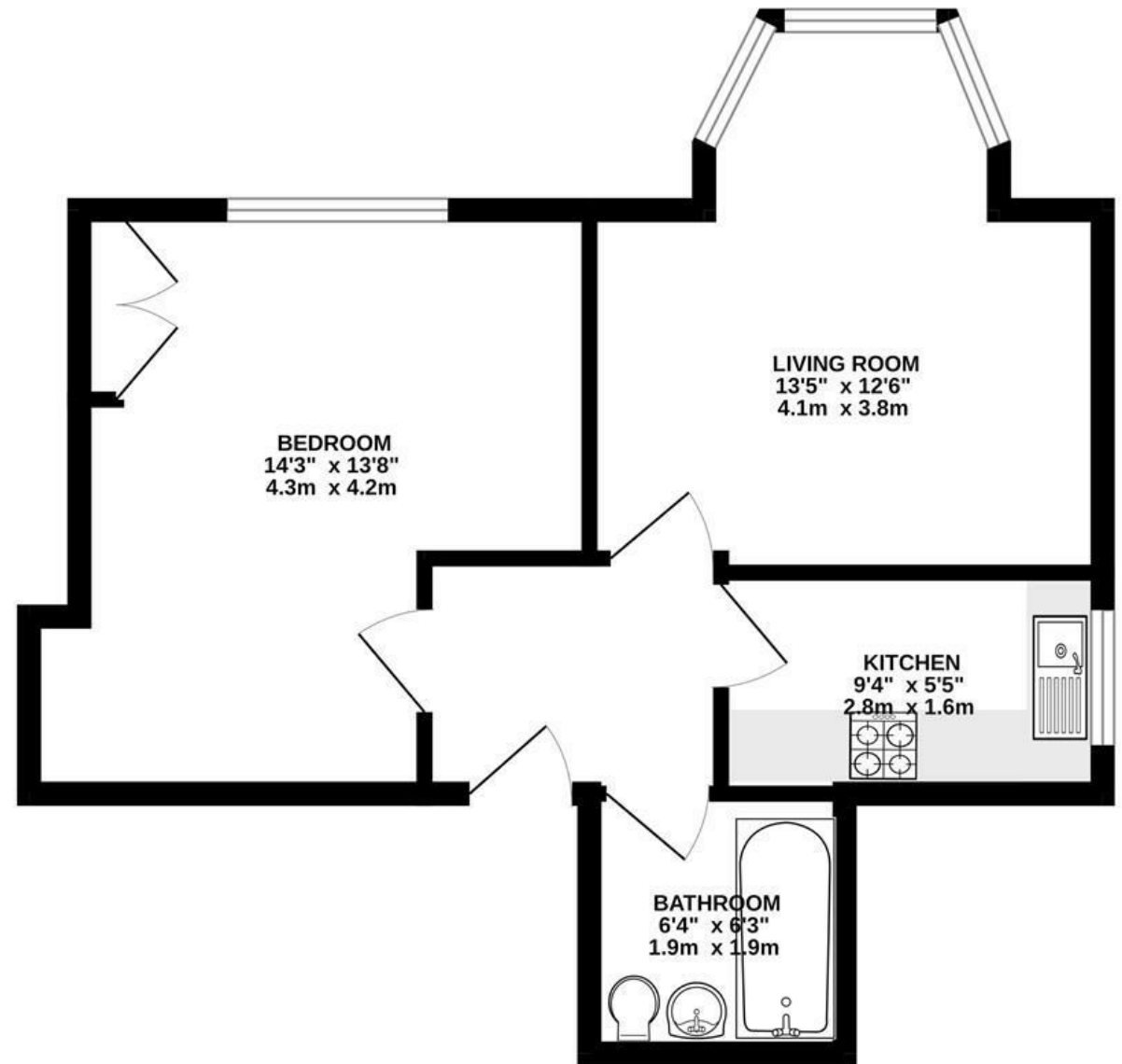


# Chesterfield Road

## ST ANDREWS

APPROXIMATE FLOOR AREA  
39 SQM / 428 SQFT



Illustrations are for reference purposes only,  
measurements are approximate, not to scale.

**Boardwalk**

# Chesterfield

ST. ANDREWS, BRISTOL



£265,000



1 Bedrooms



BS6 5DS



1 Bathrooms

*"I have loved living in this light, bright and cosy flat. I didn't know much about the area before moving, but now couldn't imagine living anywhere else. The big bay window has fantastic views up the road towards St. Andrews Park, only a three minute walk away! Carry on past the park and in another five minutes you are on Gloucester Road, with it's myriad of independent shops, cafes, bars and restaurants!"*

